

2025 MotorSport NZ ClubSport Championship Supplementary Regulations – Part 1 - REISSUED

1. JURISDICTION

The 2025 ClubSport Championship, the New Zealand Junior ClubSport Championship and the Women in Motorsport Ladies Championship are being organised and promoted by MotorSport Bay of Plenty Inc and will take place on Saturday 19th April and continuing through to Sunday 20th April 2025.

The Championship is being held under these Supplementary Regulations, the current MotorSport NZ ClubSport Championship Articles, the MotorSport NZ National Sporting Code and its Appendices and Schedules particularly Appendix Five, Schedule C, Part One and Part Two.

The MotorSport NZ Permit Number is: **240400**

2. MAJOR OFFICIALS

- 2.1 MotorSport NZ Stewards: Campbell Robertson (Chair), Steve Lackman
- Clerks of the Course:
- | | |
|--|---|
| Motorkhana/Autocross: | Mike Torr |
| Bent Sprint | Roger Bailey |
| Secretary: | Linda Loughlin |
| Chief Scrutineer: | Phil Macquarie |
| Results: | Linda Loughlin |
| Judges: | |
| Starts: | Start Line Marshalls |
| Noise: | Mike Torr, Roger Bailey |
| Driving Breeches
(Champ Article 9): | Motorkhana test officials |
| Tyre Eligibility
(Champ Article 9.2.1(h): | Phil Macquarie, 027 575 2282 |
| Organising Committee: | Jono Lee, Neil Rogers, MikeTorr. Linda Loughlin |
- 2.2 The email address and contact phone number for all matters pertaining to the event are:
- The Secretary, MSNZ ClubSport Championship
Email: lindaloughlin@outlook.co.nz
Mob: 021 644 177

3. EVENT DESCRIPTION

- 3.1 The MotorSport NZ ClubSport Championship, MotorSport NZ Junior ClubSport Championship and the Women in Motorsport Ladies Championship is a combination of three disciplines, a Motorkhana, an Autocross, and a Bent Sprint held over one weekend, and with points from each individual event combining to determine the overall Champion, as detailed in the Championship Articles.
- 3.2 Event Venue: The venue is at the TECT Park, Pyes Pa Road, Tauranga, with the Motorkhana and Autocross within the TMMI Motorsport Area and the Bent Sprint on a Tarmac Public Road.

Parking and Pits will be located in the TMMI Motorsport Area adjacent to the Motorsport Hub. Detailed maps will be forwarded with the Acceptance of Entry. A map of the Pits for each discipline will be emailed to entrants before the event.

Competitors are requested to do all servicing on a ground sheet and to take all rubbish away with you at the end of the day.

3.3 **MOTORKHANA**

3.3.1 Venue: TMMI Hub site

3.3.2 Surface: Gravel

3.3.3 Tyres to be used must meet the requirements of Championship Articles 2.2.1(h) (ii) & (iii). Prohibited tyres for the Motorkhana include, but are not limited to:

- Tyres designed primarily for gravel surface rallying,
- Tyres designed for mud surface rallying,
- Tyres designed for off road use,
- Tyres designed for use on light or medium trucks,
- Tyres designed for use on SUV's,
- Tyres with a tread pattern designed for use on soft or low traction surfaces,
- Winter Tyres as defined by NZTA VIRM Section 10-1

3.4 **AUTOCROSS**

3.4.1 Venue: MBOP Autocross track. In the event of inclement weather, at the Clerk of Course's discretion, the Autocross may move to the TMMI Hub site.

3.4.2 Surface: Volcanic Clay/sand

3.4.3 Tyres to be used must meet the requirements of Championship Articles 2.2.1(h) (ii) & (iii). Prohibited tyres for the Autocross include, but are not limited to:

- Tyres designed primarily for gravel surface rallying,
- Tyres designed for mud surface rallying,
- Tyres designed for off road use,
- Tyres designed for use on light or medium trucks,
- Tyres designed for use on SUV's,
- Tyres with a tread pattern designed for use on soft or low traction surfaces,
- Winter Tyres as defined by NZTA VIRM Section 10-1

3.4.4 **RESULTS:** Fastest run wins, by Class and Overall. NOTE: The Autocross timing equipment used, records both reaction time and jumped starts. In the case of a jumped start, a penalty of **20** seconds will be applied to that run.

3.5 **BENT SPRINT**

3.5.1 Venue: Whataroa Road

3.5.2 Surface: Seal, approximately 2.7km

3.5.3 Tyres to be used must meet the requirements of Championship Articles 2.2.1 (h) (i).

3.6 **RESULTS:** Fastest run wins, by Class and Overall. NOTE: The Bent Sprint timing equipment used, records both reaction time and jumped starts. In the case of a jumped start, a penalty of **20** seconds will be applied to that run.

3.7 **CLASSES:** Vehicles will be divided into the following classes:

- A 0-1600cc
- B 1601-2000cc
- C 2001-2500cc
- D 2501cc and over
- E1 4WD pre year 2000
- E2 4WD year 2000 and over

4. **ENTRIES**

4.1 Entries **MUST** be made through the MotorSport Online system MSNZ Profile using either the App or online via <https://online.motorsport.org.nz/msnzprofile/login> .

NOTE: An entry will not be deemed valid until payment is received.

4.2 Opening and Closing Dates:

Entries will open on 1 March 2025 and Close (at normal fees) on 13 April 2024 at midnight.

Entries received after 13 April 2025 will be subject to the Late Fee.

There will be a maximum of 40 entries accepted for each discipline. Championship entries will be given priority over non-championship. Non-championship entries will be included in order receipt.

Late Entries will be accepted up until 12:01PM (midday) on Friday 18th April 2025. Late Entries will only be accepted at the discretion of the Clerk of Course. No entries on the day for any of the disciplines.

Organisers reserve the right to refuse any entry in accordance with the prescribed provisions of the National Sporting Code.

4.3 Entry Fees:

- \$330.00 all events; or
- 195.00 Tarmac Bent Sprint, or
- \$75.00 each event Motorkhana and Autocross

An early bird discount is available to Championship entries received before 30 March 2025. The discounted entry fee is \$300.00.

Late Entry Fee is an additional flat fee of \$50.00 (whichever event is entered).

Entry is payable to:

MotorSport Bay of Plenty Inc
03-1548-0034032-00

4.4 Refund Policy:

Withdrawals received up to the close of Normal Entries will receive a 75% refund.

Withdrawals after the close of entries and before the start of documentation will receive a 50% refund.

Any withdrawals after the start of documentation will not receive a refund.

5. **COMPETITOR REQUIREMENTS AND UNDERSTANDING**

5.1 Licence Requirements:

All drivers must hold as a minimum a Junior M Grade Competition Licence or higher, and current membership with a Member Club.

If the Entrant is other than a driver, an Entrants Licence in the name of the Entrant is required.

- 5.2 Competitor Understanding:
In submitting the entry competitors (Entrant and Drivers) are deemed to fully understand the MotorSport NZ National Sporting Code and its relevant Appendices and Schedules. In particular:
- The National Sporting Code Articles pertaining to protests and competitors' obligations
 - Appendix Five, Schedule C.
- 5.3 All competitors will be required to wear overalls in compliance with Section 6.4.4 of the Championship Articles. Please see Appendix 2.

6. ELIGIBLE VEHICLES

All vehicles shall comply with Appendix Five Schedule C and Appendix Two Schedule A of the current MotorSport Manual unless stated otherwise in these Supplementary Regulations. Championship entries must comply with Art 2.2 of the Championship Articles.

7. DOCUMENTATION AND SCRUTINEERING AUDIT INSPECTION

- 7.1 In accordance with the MSNZ MotorSport Manual, Appendix 2, Schedule A, Article 3.4(6), Competitors **MUST** present a physical logbook at Documentation and Scrutineering, if a logbook is required as per Schedule A, Article 3.4(2). Failure to do so will invoke a penalty in accordance with Schedule P – A2A.1.
- 7.2 Competitors must present themselves at Documentation for the checking of Licences and documents, issuing of competition numbers and applicable advertising material prior to presenting the car for Audit Scrutineering. Cars will not be cleared to compete until all these numbers and advertising requirements are firmly affixed in the appropriate places on the vehicle.
- 7.3 Documentation for all competitors will be held from 3.00pm to 5.30pm on Friday 18 April 2025. The venue will be PF Automotive, 95 Birch Avenue, Judea, Tauranga.
- By **prior arrangement only**, on Sat/Sun 19/20 April, there will be a short documentation for out-of-town non-championship competitors. Please contact the Secretary of the Event to arrange.
- 7.4 Scrutineering Audit Inspection:
Friday 18 April 2025. For all competitors scrutineering will be held from 3.00pm to 5.30pm. The venue will be PF Automotive, 95 Birch Avenue, Tauranga.
- By **prior arrangement only**, on Sat/Sun 19/20 April, there will be a short scrutineering period for out-of-town non-championship competitors. Please contact the Chief Scrutineer to arrange.
- 7.5 Remote Scrutineering
Remote Scrutineering for out-of-town competitors is encouraged. Competitors may arrange with a Licensed Scrutineer to perform a Scrutineering Audit with the two weeks prior to the event. Inspections must be carried out between 7-17th April 2025. Competitors are to contact the Chief Scrutineer to arrange for authorisation of their preferred scrutineer. All inspections will be carried out in accordance with the online scrutineering schedule. All logbooks must be signed at the time of scrutineering.

8. PROVISIONAL TIMETABLE

1 Mar 25	Event Entries Open	MS Online
30 Mar 25	Early Bird Entries Close	
13 Apr 25	Normal Entries Close	
14 Apr 25	Late Entry Fee applied	
18 Apr 25	Late Entry Close	
18 Apr 25	1500-1730 Documentation and Audit Scrutineering	PF Automotive, Tauranga
19 Apr 25	Documentation and Audit Scrutineering by Arrangement 0730-0800 at event venue	At Club Trailer
	0830 Drivers Briefing	At Club Trailer
	0900 Motorkhana Starts	In Hubsite
	1330 Autocross Starts	MBOP Autocross Track
	1630 Stewards Meeting Provisional Day 1 results published	Venue TBA
20 Apr 25	Documentation and Audit Scrutineering by Arrangement 0800-0900 at event venue	At Club Trailer
	0930 Drivers Briefing	At Club Trailer
	1000 Bent Sprint Starts	Whataroa Rd
	1500 Stewards Meeting Provisional Day 2 Results published	Venue TBA
	1530 onwards Prizegiving venue open	Arrival Centre TECT Park

9. OFFICIAL BULLETINS

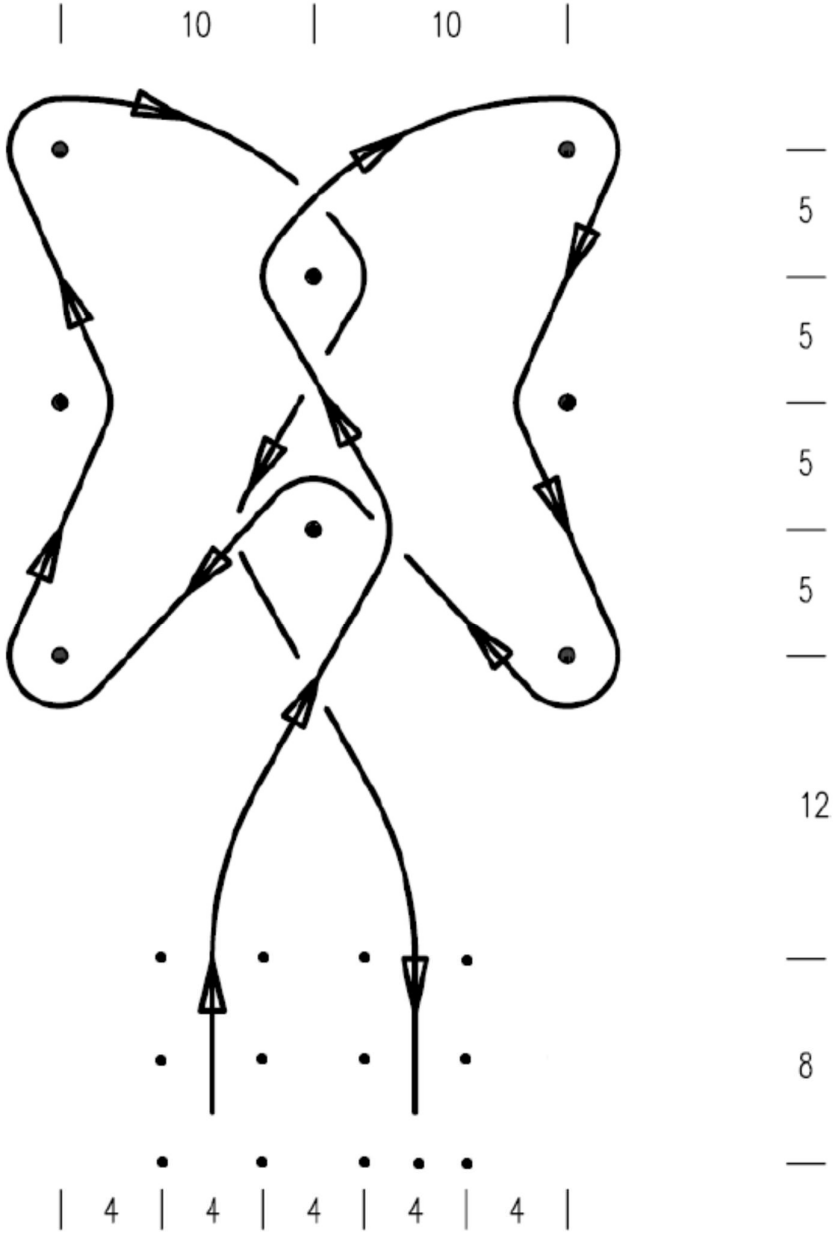
Official Bulletins may be issued in accordance with the provisions of the National Sporting Code.

10. GENERAL INFORMATION

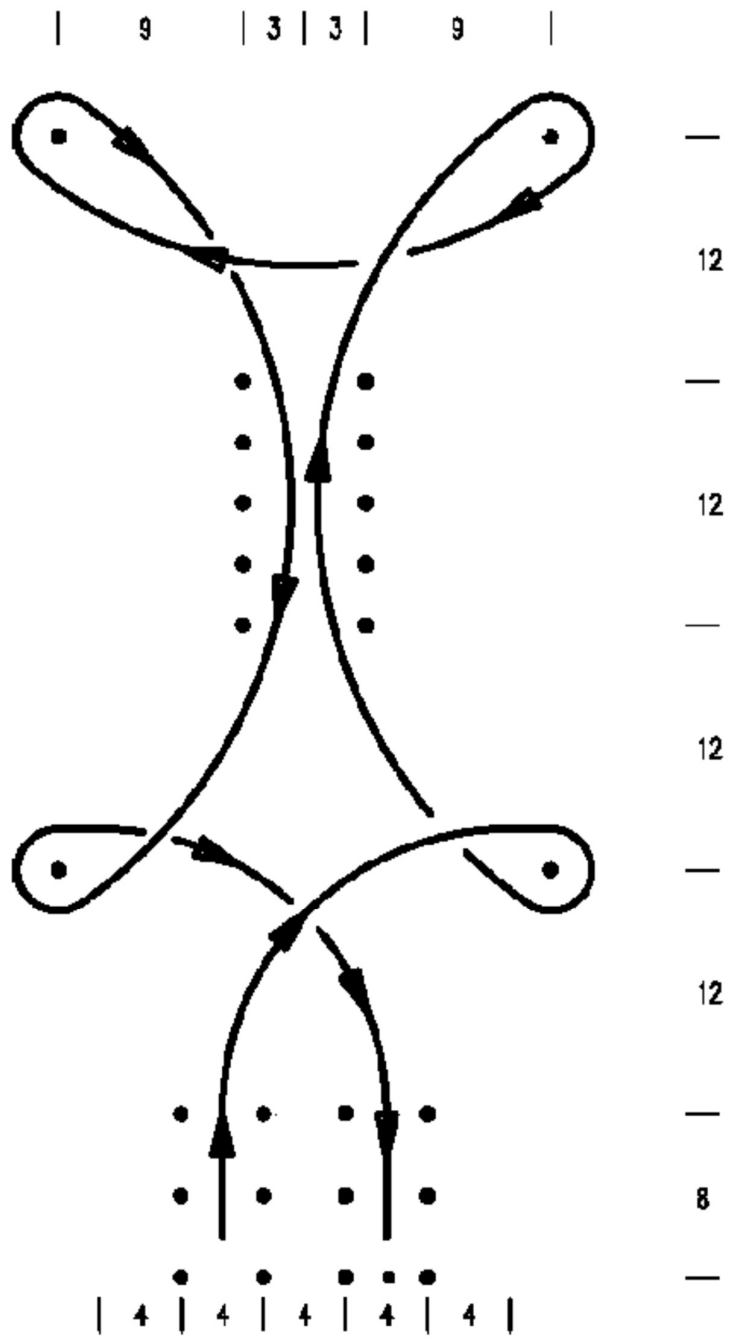
- 10.1 A Driver's Briefing will be held each day at the venue by the Event Trailer, immediately before the event as outlined in the Provisional Timetable. Attendance by all drivers is compulsory and a roll call will be taken. Failure to attend will result in a penalty in accordance with the NSC
- 10.2 Passengers are not allowed in any of the timed competition runs.
- 10.3 Alcohol is not permitted to be consumed by any competitor or their crew at the event, before or during the day's competition.
- 10.4 Tyre warmers or any method of artificially warming tyres are prohibited.
- 10.5 Pursuant to the National Sporting Code Article 13, the organisers advise that if less than 35 entries are received by the entry closing date the meeting may be postponed or cancelled.
- 10.6 Prizegiving. A Championship Prizegiving will be held at the completion of the event. This will be held at the Arrival Centre of the Park.

APPENDIX 1

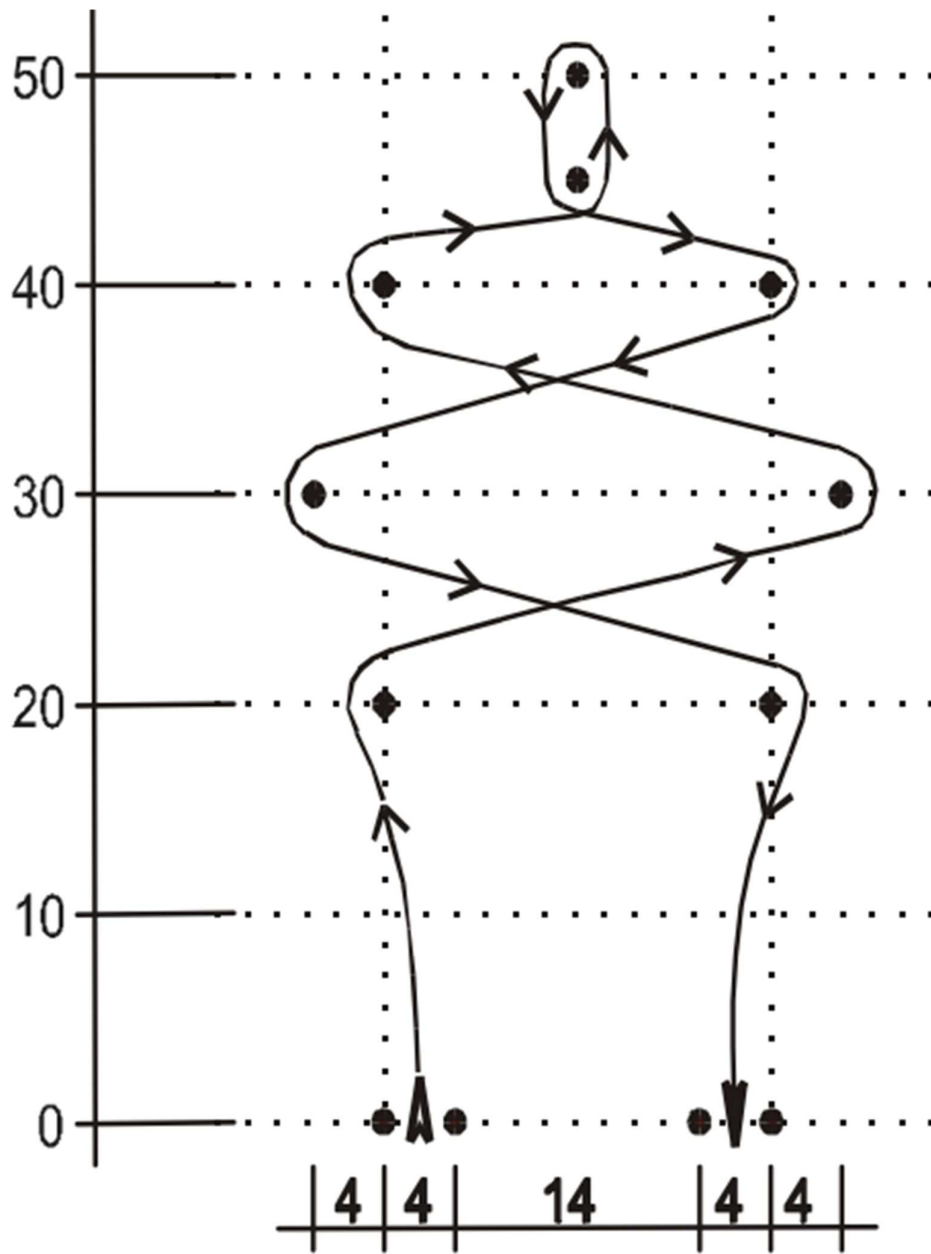
MOTORKHANA TESTS TO BE USED

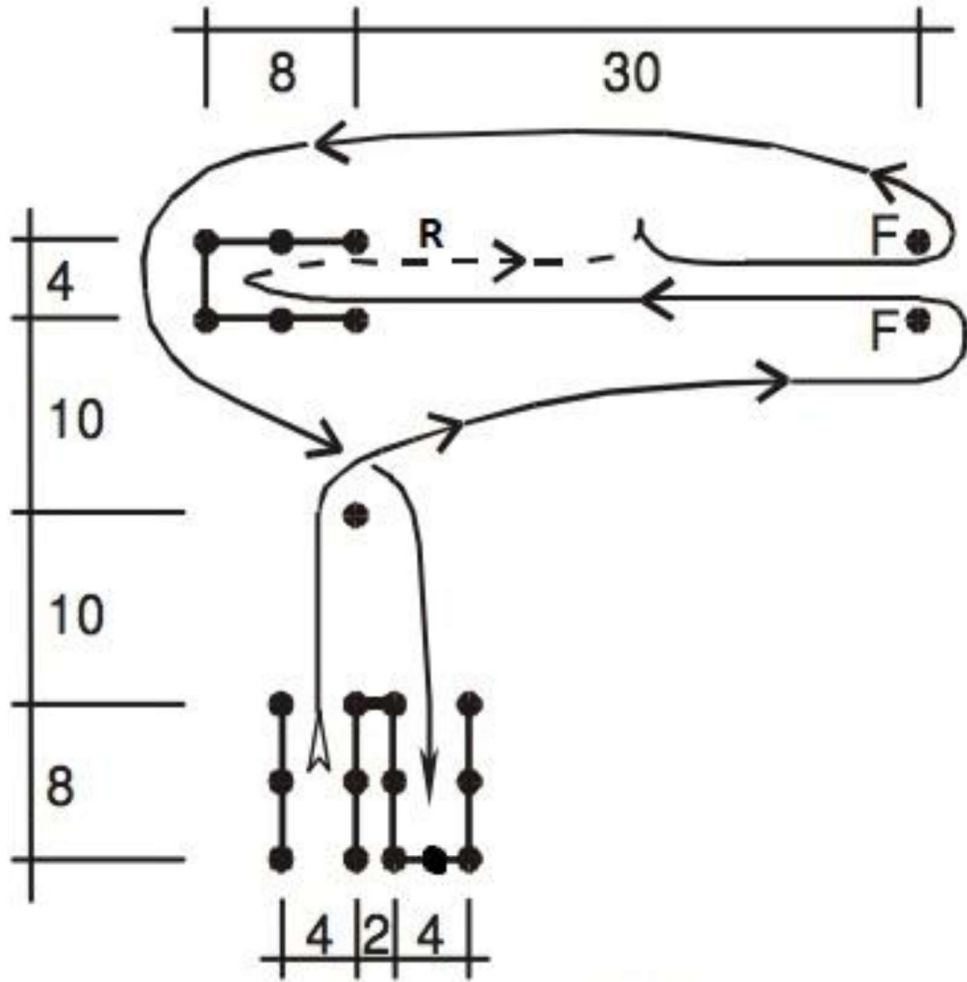


Butterfly

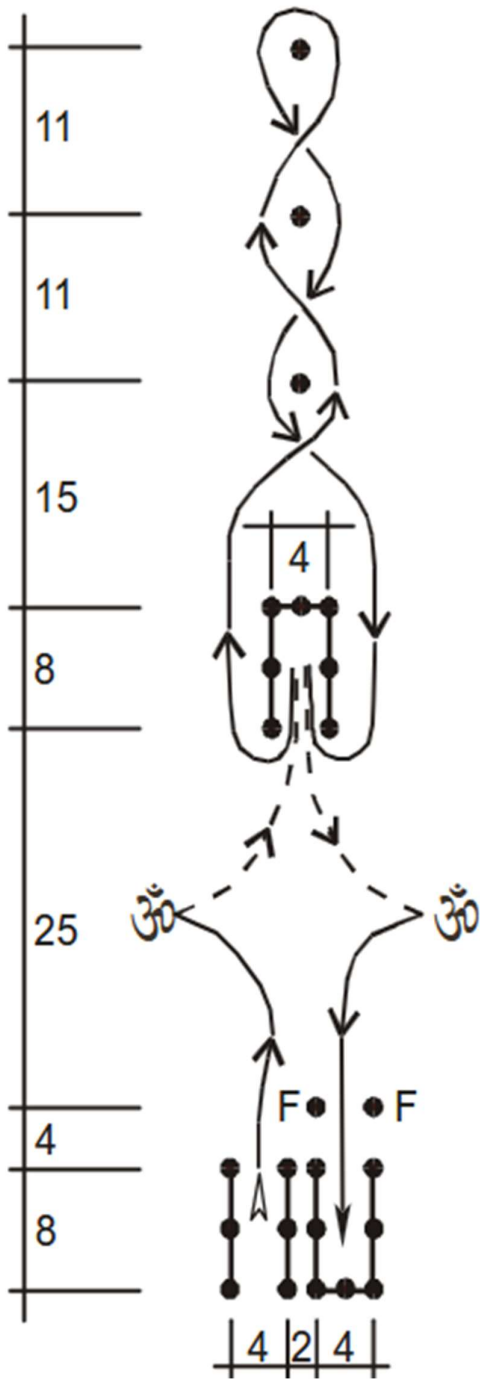


Mothballs

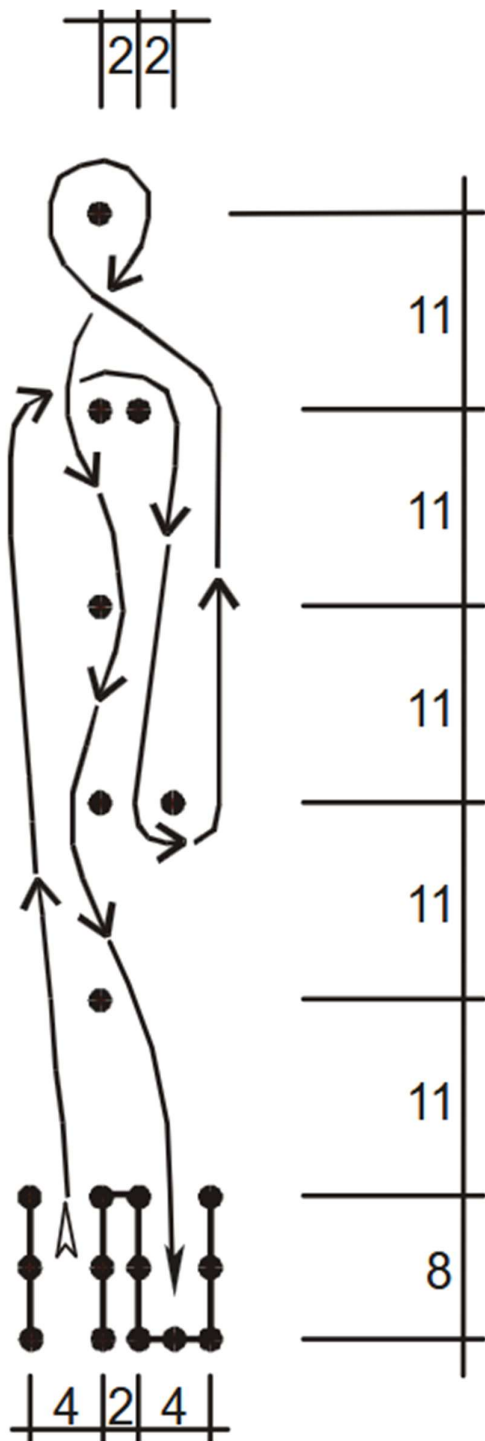




Garage



Hopkirk



Long nose

APPENDIX 2

Excerpt from MSNZ MotorSport Manual, Schedule A – Art 4.3 – Protective Clothing

4.3 Protective Clothing:

(1) **Types of Protective Clothing:** Protective clothing is categorised as follows and shall include but is not limited to the following types as per Chart (1):

Chart (1) – Protective Clothing Types / Standards					
Overall	Underwear	Socks	Shoes	Gloves	Balaclava
One-piece garment worn as an outermost layer, designed with close fitting front, cuffs and ankles which entirely cover the wearer except for the head, hands and feet	Garments designed to be worn between the overall and the wearer's body entirely covering the wearer except for the head, hands and feet	One-piece close fitting garment covering at least to mid-calf	Garment that covers the whole foot and ankle	Garment that covers the whole hand and wrist	One-piece close fitting garment that covers the head and neck
A FIA 8856-2000 ⁽¹⁾ FIA 8856-2018 ⁽²⁾	FIA 8856-2000 ⁽¹⁾ FIA 8856-2018 ⁽²⁾	FIA 8856-2000 ⁽¹⁾ FIA 8856-2018 ⁽²⁾	FIA 8856-2000 ⁽¹⁾ FIA 8856-2018 ⁽²⁾	FIA 8856-2000 ⁽¹⁾ FIA 8856-2018 ⁽²⁾	FIA 8856-2000 ⁽¹⁾ FIA 8856-2018 ⁽²⁾
B FIA Norm 1986 ISO 6940 ⁽⁶⁾ Multi-layer SFI 3.2A/3 ⁽⁴⁾ Multi-layer FR material ⁽³⁾	SFI 3.3, ⁽⁷⁾ ISO 6940 ^(7, 8)	SFI 3.3 ISO 6940 ⁽⁸⁾	SFI 3.3 ISO 6940 ⁽⁸⁾	SFI 3.3 ISO 6940 ⁽⁸⁾	SFI 3.3 ISO 6940 ⁽⁸⁾
C SFI 3.2A/1, ⁽⁵⁾ ISO 6940 ⁽⁸⁾ Single-layer FR material ⁽³⁾	Cotton ⁽⁶⁾ Wool, FR material ⁽³⁾	Cotton ⁽⁶⁾ Wool, FR material ⁽³⁾	Leather, FR material ⁽³⁾	Leather, FR material ⁽³⁾	–
D Cotton ⁽⁶⁾	–	–	–	–	–
E No requirement	No requirement	No requirement	No requirement	No requirement	No requirement

References:

1. All garments certified to FIA 8856-2000 Std are detailed in FIA Technical List No.27. Where FIA Std garments are mandated under this schedule all garments must maintain compliance with the standard.
2. FIA 8856-2018 will become mandatory for level A from 31 December 2028 for FIA inscribed classes.
3. (FR) Fire Resistant means garments made from purpose designed fabrics with 'built-in' self-extinguishing properties. The material must be identified on the manufacturers label with common examples being; Nomex, CarbonX, Proban®, ProTek®, Pyrovatex®, Aramid fibres etc.
4. SFI 3.2A/3< means SFI Quality Assurance Specifications 3.2A/3, 3.2A/5, 3.2A/10, 3.2A/15 and 3.2A/20. The SFI 3.2A Spec label will be found on the left arm or the collar.
5. SFI 3.2A/1< means SFI Quality Assurance Specifications 3.2A/1. The SFI 3.2A Spec label will be found on the left arm or the collar.
6. All cotton garments except socks must have a manufacturer label stating 100% Cotton (no 'Spandex' or Synthetics).