

ACCREDITED ARTICLES GOVERNING THE 2022-23 Pre 65 North Island Race Series

Preamble

The Pre 65 Racing Saloons Inc. hereby declares the following articles to be those of the Pre65 North Island series governing competition for drivers of Schedule Pre 65 eligible vehicles.

The Series is held under a MotorSport New Zealand Accredited Permit No: 220445

The Series is organised and held in accordance with the MotorSport NZ National Sporting Code, the Standing Regulations and any Supplementary Regulations applicable to and issued by the Organising / Inviting Club of each Round of the Series.

These articles are at all times to be read in conjunction with:

- The National Sporting Code (NSC) and its appropriate Appendices and Schedules,
- The Technical Regulations - Schedule P65
- The Event Supplementary Regulations issued by the inviting Clubs.

OFFICIAL RECORD OF AMENDMENTS ISSUED TO THESE ARTICLES

This table records all official Amendments issued during the season relative to these Articles;

Amendment Number	Issue/Effective date	Article reference	Subject / Notes
Pre 65-23-A001	30/03/2023	6.1	Reschedule of Rounds due to Cancellation of Round 3

1. INTERPRETATIONS:

In these Articles, the definition of terms used within this Schedule shall be referenced from the National Sporting Code, and as detailed below:

“The Series” means the Pre65 North Island Series for cars complying with Schedule P65, being a series of events, the results of which are aggregated to form a final result; and

“The Club(s)” means the Pre65 Racing Saloons Inc.; and

“Round Organiser” or **“Inviting Club”** means the MotorSport NZ Member Club organising a Meeting and/or Event which is a round of the Series; and

“National Sporting Code” means the National Sporting Code issued by MotorSport NZ from time to time; and

“Round” means each Meeting and / or Event of which the results of which qualify for points in the Series; and

“Committee” means the elected members appointed as the Committee by the Pre65 Membership.

2. OBJECTIVES:

Racing saloons from the halcyon days of the sixties, relive the excitement of these well-remembered cars.

Pre 65 racing started in New Zealand in 1980, by a group of South Island enthusiasts who had cars but no class to race in. The North Island club started in 1990.

Pre65 Racing is for those who want to race Historic Saloon cars from the Fifties and Sixties, the cars are lightweight dedicated race cars, but still retain the period major components, no turbo's, fuel injection or computers.

3. ELIGIBILITY

3.1 DRIVER ELIGIBILITY:

3.1.1 All Drivers shall hold a C1 Grade Competition Licence or higher and where the Entrant is other than the Driver, an Entrant's Licence is required in the name of the Entrant.

3.1.2 All drivers and entrants shall be financial members of The Clubs or any MotorSport NZ affiliated Club.

3.2 VEHICLE ELIGIBILITY:

3.2.1 Eligibility shall be for vehicles complying with the specifications as set out in Schedule P65.

3.2.2 The Club reserves the right to invite other vehicle(s) to compete, in addition to those detailed in Article 3.2.1 above. Any such invitation shall be decided by the Committee, and they shall not be eligible for series points.

3.2.3 Invitational vehicles will generally comply with the eligibility criteria as prescribed in Schedule P65.

- 3.3** All entrants and drivers shall agree to submit their vehicle to eligibility scrutineering when required by the appointed Series Scrutineer for compliance to Appendix Two, Schedule A, Appendix Four of the National Sporting Code, and **Sch P65**.
- 3.4** Only those invitational non-financial competitors who have been approved to participate by the Committee will be permitted to race at any Round.
- 3.5** The Club reserves the right to amalgamate with or compete in conjunction with any other race series, class or club at any Round of the Series without in any way affecting its powers to award any title. Any such invitation shall be decided by the Committee.
- 3.6** There are five(5) distinct **CLASSES** of vehicle;

- (1) **Class A:** being vehicles with a corrected engine capacity of 4201cc and over
- (2) **Class B:** being vehicles with a corrected engine capacity of 2801 - 4200cc
- (3) **Class C:** being vehicles with a corrected engine capacity of 1401 - 2000cc
- (4) **Class D:** being vehicles with a corrected engine capacity of 0 - 1400cc
- (5) **Class E:** being vehicles with a corrected engine capacity of 2001 - 2800cc

Note: *The equivalence factor applied to two-stroke engines shall be 1.8.*

- 3.7** All Competitors shall ensure that their competing vehicle has the specified spaces reserved for the Series the Series Sponsor decals at all Rounds of the Series, as detailed in Appendix One.
- 3.7.1** No other windscreen banner/decal is permitted.
- 3.7.2** Competition number sets shall comply with the requirements of Appendix Two, Schedule A Article 6.2(1)(a)(iii), and the Driver's name may appear on both of the vehicle's rear side windows.

4. SERIES PERSONNEL

- 4.1** At each Round of the Series the following personnel, or their approved assistant/s shall have the responsibilities and authorities set out:

4.1.1 Pre 65 Racing Series Coordinator: Noeline Hobman
Home Phone No: 06 344 5915
Mobile Phone No: 0212 927 016
Email: shanenoeline@hotmail.com

**Pre 65 Racing Assistant
Series Coordinator:** Jack Packer
Mobile Phone No: 0220 829 422
Email: jackpacker@gmail.com

Who shall have the authority of a Series Coordinator set out in the National Sporting Code and who is responsible for and authorised on The Clubs behalf to:

- (a) Deal with all administrative matters including receiving all Round entries.
- (b) Record and publish all Series points schedules.

- (c) Liaise with Inviting Clubs on all matters pertaining to these articles.
- (d) Ensure correct placement of decals on vehicles contesting the series.
- (e) Provide the Inviting Club/s with grid starting positions where these differ from those detailed in Appendix Four Schedule Z, Article 6.1.

4.1.2 Pre 65 Racing Series Scrutineer: Shane Hobman
Mobile Phone No: 021 292 7016
Email: shanenoeline@hotmail.com

Who shall have the authority of a Series Scrutineer set out in the National Sporting Code and who is responsible for and authorised on The Clubs behalf to:

- (a) Deal with all technical matters pertaining to the series.
- (b) Affix seals, as and when deemed appropriate, and
- (c) Inspect any competing vehicle within the Series in order to ascertain compliance with the technical regulations, and
- (d) Assist competitors with technical inquiries relative to the technical regulations applicable to their vehicle, and
- (e) To report, to the Clerk of the Course, any instances where a breach of the technical regulations has been proven, (Refer to Breach of Eligibility Form) and

Note: *The Series Scrutineer may appoint an assistant/s to assist with technical duties in connection with the Series.*

4.2 All correspondence shall be addressed to the Series Coordinator, who is authorised by The Register to carry out all the necessary administrative duties for the Series.

5. SERIES ENTRY

5.1 By joining the Club(s), the competitor is then eligible to enter any round of the Series and is entered into the Series by default.

5.1.1 Club membership can be applied for, or renewed on the Pre-65 website:
<https://pre65.co.nz/membership/>

5.1.2 The Series reserves the right to accept or decline entries into the series as per NSC 21.

5.2 By entering the Series, all Competitors / Entrants:

- (1) Are deemed to be in acceptance of these Series Articles as they are presented, and
- (2) Agree to comply with these Articles and those of the National Sporting Code, and

- (3) Shall be at all times responsible for the presentation of their competing vehicle with respect to safety requirements under Schedule A, and eligibility requirements under these Series Articles, and
- (4) Shall comply with any specific requirements of the official Series Sponsor(s), as detailed within these Series Articles.

5.3 The Club(s) will assign competition numbers to all Competitors of the Series.

5.3.1 Race Numbers 1, 2 and 3 must be used by the competitors finishing 1st, 2nd and 3rd in the overall series points from the preceding season.

5.3.2 All numbers on competing vehicles shall comply with the prescriptions of Appendix Two; Schedule A, Article 6.2 – Competition Numbers.

5.4 Entry to each Round of the Series should be made as outlined in the Round Supplementary Regulations. Any entry will not be deemed valid until payment is received.

6. SERIES STRUCTURE

6.1 The Series shall comprise of the following Rounds:

Round	Date	Venue	Inviting Club
1	22-23 October 2022	Circuit Chris Amon: Manfeild	Manawatu Car Club
2	11-13 November 2022	Circuit Chris Amon: Manfeild	MG Classic Racing Register
3	7-8 January 2023	Taupo International Motorsport Park	Historic Racing Club
4	25-26 February 2023	Pukekohe Park Raceway	Historic Racing Club
5	18-19 March 2023	Hampton Downs Motorsport Park	Historic Racing Club
6	24-26-March 2023	Pukekohe Park Raceway	Speedworks Motorsport Club
7	15-16 April 2023	Taupo International Motorsport Park	Historic Racing Club

6.2 The Organiser reserves the right to either cancel or amend any Rounds of the Series due to force majeure without affecting in any way its power to award any title.

6.3 Timekeeping:

6.3.1 The Round Organiser, the Inviting Club, the host circuit or the Series Coordinator shall provide timing equipment that will be deemed to be the official timing equipment for the meeting.

6.3.2 All competitors shall ensure that timing equipment is looked-after with all due care and attention whilst in their possession and that all equipment is returned as and when requested. The Competitor is liable for all costs required to repair or replace equipment damaged or lost.

6.3.3 All Practice, Qualifying and Races shall be by electronic timing, when available at Series Rounds. Such electronic timing systems shall be mounted securely to the vehicle forward of the centre line of the front wheels, and within 200mm-500mm from the front edge of the front bumper. It must be mounted within 500mm off the ground and may be mounted on either side of the vehicle.

7. ROUND FORMAT

7.1 Testing sessions: may be available to Drivers on the Friday prior to any Round of the Series and shall be subject to availability and track hire charges as set by the Inviting Club/s.

7.2 Qualifying Sessions: shall be a minimum of fifteen(15) minutes duration.

7.3 Race format: There shall be three races at each Round.

7.3.1 For the 2022-2023 season, Pre-65 will run with the Super Mini Challenge Accredited Race Series in a combined grid.

7.4 Races: shall run to the following format:

Round	Venue	Race 1	Race 2	Race 3
1	Circuit Chris Amon: Manfeild	8 Laps	8 Laps	8 Laps
2	Circuit Chris Amon: Manfeild	8 Laps	8 Laps	8 Laps
3	Pukekohe Park Raceway	8 Laps	8 Laps	8 Laps
4	Taupo International Motorsport Park	6 Laps	6 Laps	6 Laps
5	Pukekohe Park Raceway	8 Laps	8 Laps	8 Laps
6	Hampton Downs Motorsport Park	8 Laps	8 Laps	8 Laps
7	Taupo International Motorsport Park	6 Laps	6 Laps	6 Laps

7.5 Starting positions shall be determined by:

- (a) **Race One:** The start grid shall be made up from the qualifying times, fastest competing vehicle to the front, with a 'Standing Start'.
- (b) **Race Two:** Shall be a 'Handicap Race Grid Start' with grid positions determined by the fastest lap time achieved in qualifying or Race One, slowest competing vehicle to the front of the grid, descending to the fastest competing vehicle, with the time delay between each vehicle set by the Series Coordinator.
- (c) **Race Three:** Shall be a 'Handicap Race Grid Start' with grid positions determined by the qualifying and race time from Race One and Race Two, slowest competing vehicle to the front of the grid, descending to the fastest competing vehicle, with the time delay between each vehicle set by the Series Coordinator.

7.6 If due to a mechanical fault or other factors a competitor believes they will exceed their qualifying or race time by more than one(1) second the competitor may nominate a lap time, and this nominated time must be written and lodged with the Series Coordinator within 60 minutes of the published results from the previous qualifying session or race. The penalties outlined in rule 9.2 will still apply to the nominated time.

7.7 At all Rounds, the Series Coordinator in conjunction with the Clerk of the Course and/or the Stewards of the Meeting, reserves the right to shorten and/or cancel any practice/qualifying sessions and/or Races in the case of Force Majeure.

8. PARC FERMÉ

- 8.1** Upon directive from the Series Scrutineer or their appointed assistant, competitors may be required to drive their competing vehicle directly (and without any team personnel/crew intervention) from the track to the designated Parc Fermé, the location of which will be notified on the Official Notice Board of the meeting.

Note: *Drivers should ensure that they and all their team personnel are familiar with the Parc Fermé regulations and limitations as detailed in the National Sporting Code Article 60.*

- 8.2** The Series Scrutineer may authorise entry of team personnel for the purposes of vehicle eligibility inspections.

9. PENALTIES, PROTESTS AND APPEALS

- 9.1** Penalties shall be applied in accordance with the prescribed articles of NSC Part VIII – Penalties.

- 9.2** **Handicap Races only:** Any Driver breaking their best time from either Qualifying or any preceding Race at that meeting by more than one(1) second (the 'break-out time') on any two(2) laps shall have a ten(10) second time penalty added to their overall race time of that Race, excepting that if:

- (1) The Driver is competing at that circuit for the first time, or
- (2) The Series Coordinator determines that the circuit condition has changed significantly, due to either weather or atmospheric conditions, or any other reason, over the course of the meeting, or

- 9.3** Any protest or appeal should be lodged in accordance with NSC and the Competitor shall advise the Series Coordinator (as a matter of courtesy) and the Competitor Relations Officer.

- 9.4** Competitors / Entrants have the right to lodge a Protest/s in accordance with NSC Part IX – Protests.

- 9.5** Competitors / Entrants have the right to lodge an Appeal in accordance with NSC Part XI – Appeals.

10. POINTS:

- 10.1** Points will be allocated to Drivers in the vehicle the driver qualified in and based on their overall finishing positions in each Race, at each Round of the Series.

- 10.2** The Series points will be allocated for overall placing, awarded as follows:

OVERALL PLACINGS

1 st	75	11 th	30	21 st	10
2 nd	67	12 th	28	22 nd	9
3 rd	60	13 th	26	23 rd	8
4 th	54	14 th	24	24 th	7
5 th	49	15 th	22	25 th	6
6 th	45	16 th	20	26 th	5
7 th	42	17 th	18	27 th	4
8 th	39	18 th	16	28 th	3
9 th	36	19 th	14	29 th	2
10 th	33	20 th	12	30 th	1
and lower					

- 10.3 Class Points:** Separate points will be applied to each Class as per the table detailed in Article 7.2 and will be allocated to competitors based on their Class finishing positions in each Series Race at each Round.

Note: *Class placing points are separate from 'Overall Placing' points. They are awarded to each Driver on the results of the Qualifying session, Races One, Two and Three of each Round.*

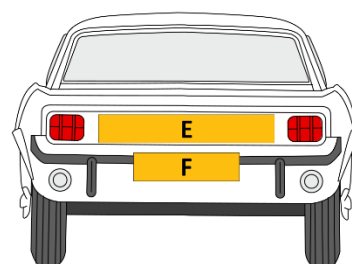
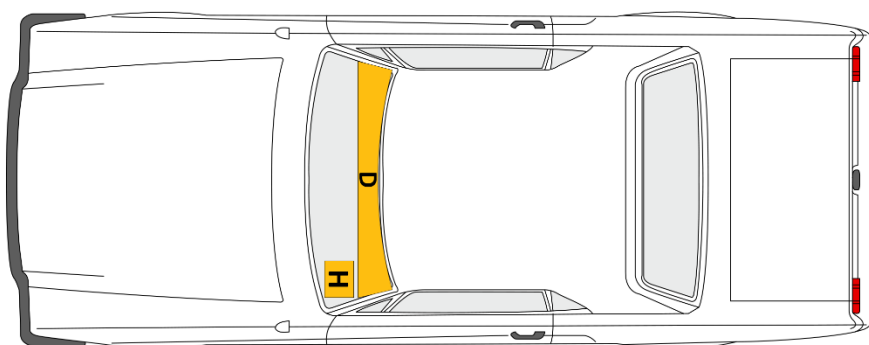
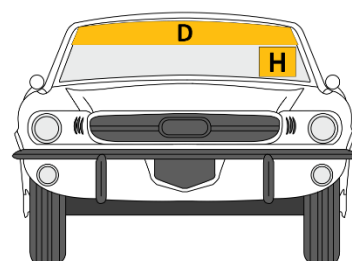
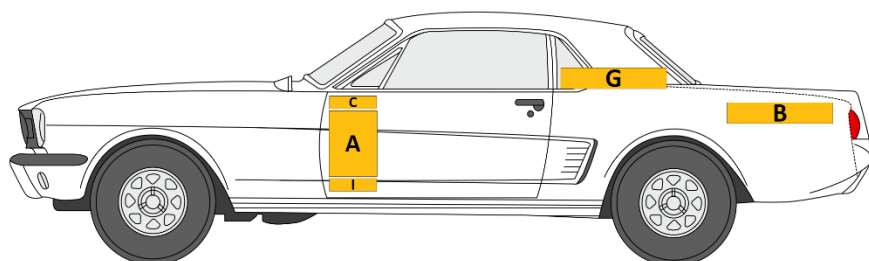
11. AWARDS

- 11.1** The awards shall be presented at the annual prize giving function held at The Club's Annual General Meeting, date and venue to be confirmed.
- 11.2** The **OVERALL SERIES WINNER** shall be the Driver with the highest total of all points (excepting Class Placing points) accumulated during the Series.
- 11.3** The Series and Class winner/s shall receive the following awards:
- (a) **Series:**
- Overall Series Champion
 - 2nd overall in the Series
 - 3rd overall in the Series
- (b) **Class A - E:**
- 1st overall in each Class
 - 2nd overall in each Class
 - 3rd overall in each Class

12. IN-CAR CAMERAS, LAP TIMERS AND IN-CAR COMMUNICATION EQUIPMENT

- 12.1** All in car camera installations shall be subject to inspection and approval by the Series Scrutineer and/or Chief Scrutineer of the Meeting.
- 12.2** In-car camera footage must be made available to the Clerk of the Course and/or Steward(s) upon request.
- 12.3** Electronic or any lap timers of any kind are prohibited excepting supplied transponders or other official track supplied event timing equipment.
- 12.4** Any telemetry (two(2) way communication) devices are prohibited.

APPENDIX ONE – DECAL PLACEMENT



	Location	Decal
A	Front door on each side	Race number
B	Rear quarter (coupe), rear door (saloon) on both sides	Series sponsor
C	Above side number on both sides	Series Sponsor
D	Top of windscreen	Series sponsor
E	On or near bit lid	Pre-65 website decal
F	Rear number plate area	Pre-65 class decal
G	Rear side window (both sides)	Driver's name
H	Left hand side of windscreen (or right hand if LHD)	Race Number
I	Below side number	MotorSport NZ Accredited Series decal